

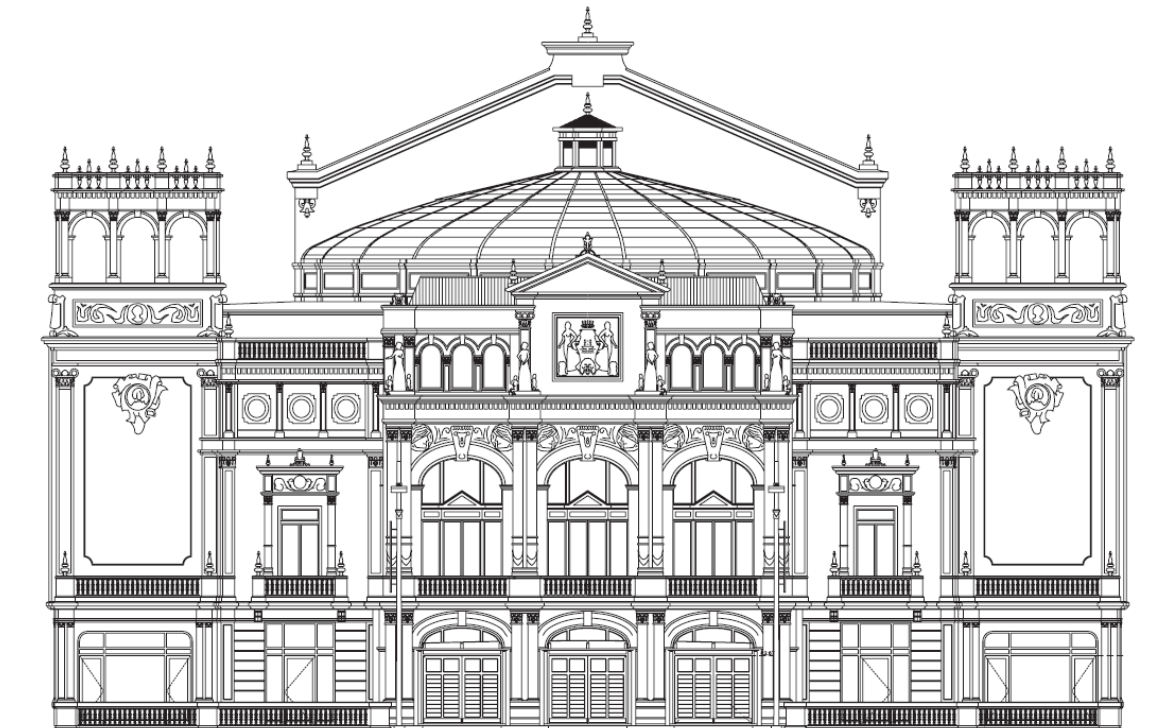


VICTORIA EUGENIA

*Antzokia*

DONOSTIA - SAN SEBASTIÁN

TECHNICAL SPECIFICATIONS



## WELCOME TO THE THEATRE

Standing in the city centre, the Victoria Eugenia Theatre is one of the most iconic buildings in Donostia-San Sebastián.

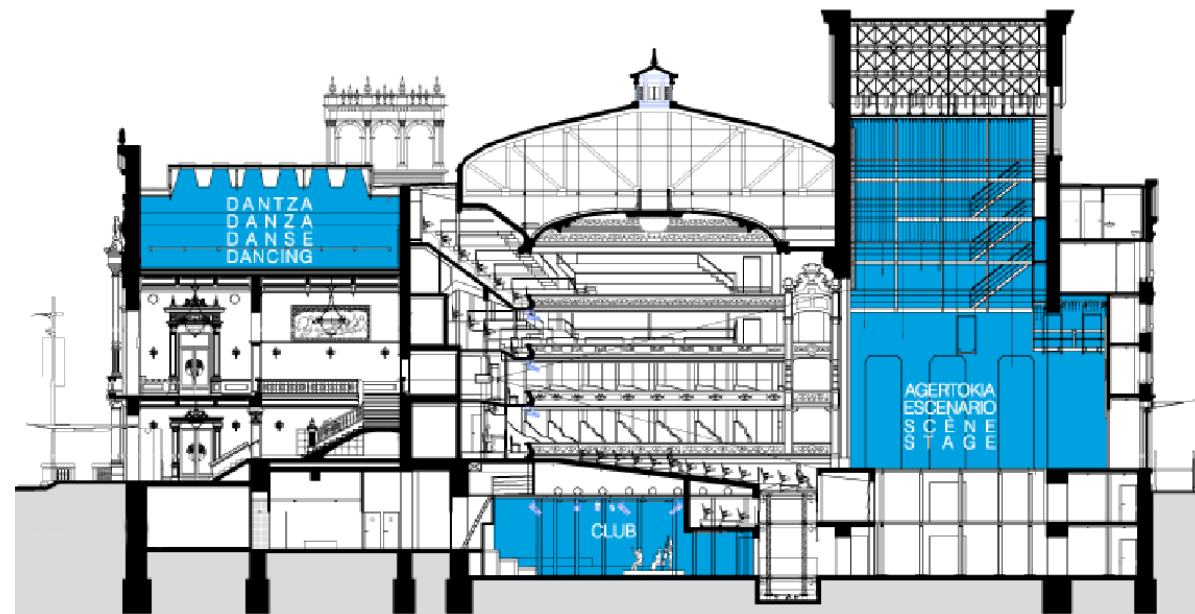
Overflowing with [history](#), the Theatre has witnessed the biggest cultural events to have taken place in the city since opening its doors in 1912.

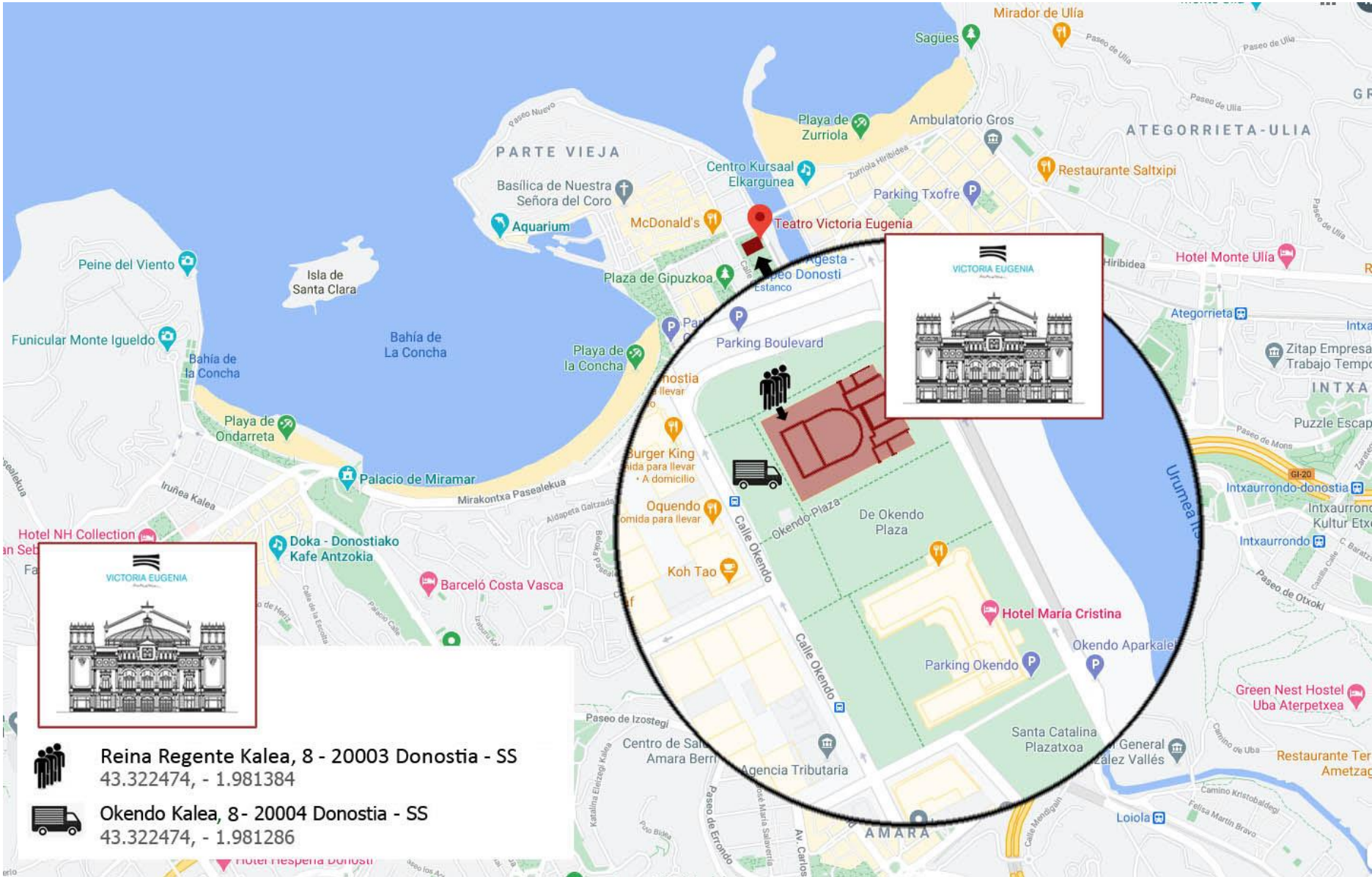
Its recent [restoration](#) in 2007 has turned the building into a renovated performing arts space, offering a wide range of equipment and [services](#), while having kept all of its original charm and [characteristics](#).

It has two fully equipped theatres:

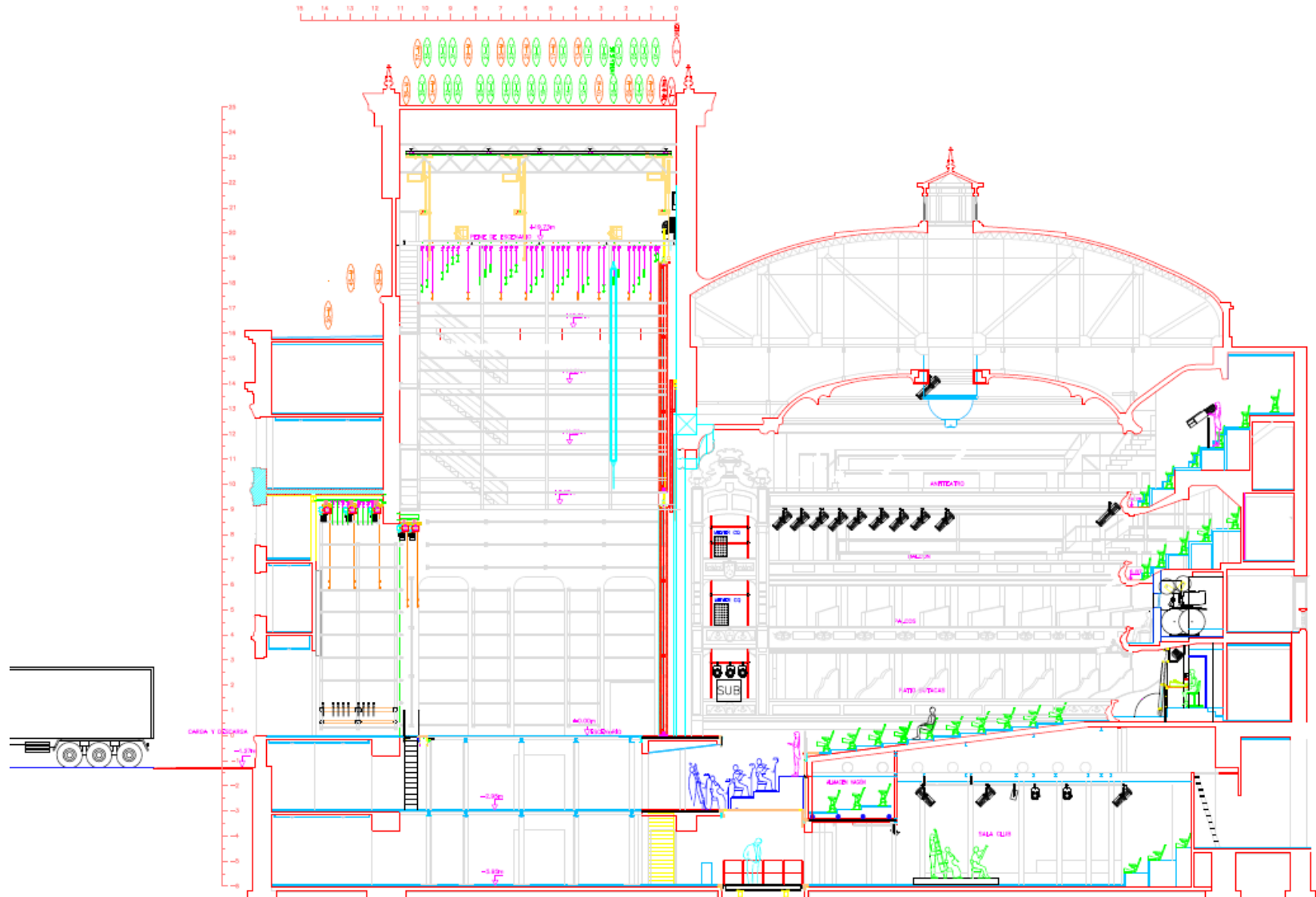
The **Main Theatre**, with a capacity of 910, and **The Club**, located in the basement of the building, with seating for 120 people.

It also has several multi-purpose spaces in which to hold activities related to the performing arts and other events.





# CROSS-SECTION –



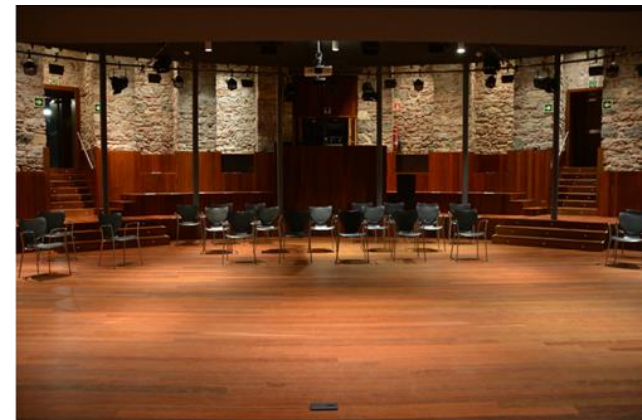
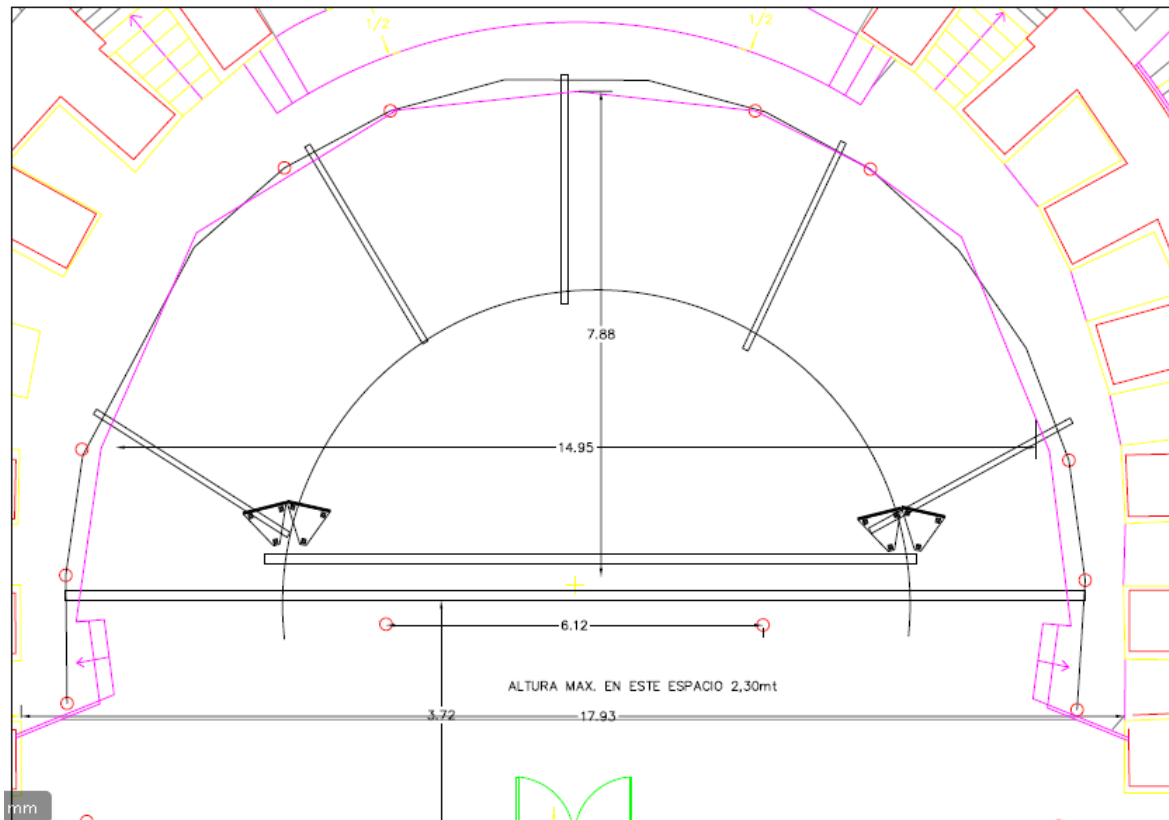
## THE CLUB

This small semi circular theatre, situated beneath the stalls, is fully equipped for the organisation of smaller performances and events. With a maximum capacity of 120 (to be confirmed in all cases depending on the stage space used), proximity to the audience and the possibility of organising events for small groups makes this theatre a special meeting place.



## STAGE SPACE

This is an unconventional stage space, with a semi-circular bar structure for lighting.



## MACHINERY

## MASKING DRAPES

The (optional) masking takes the shape of a backdrop behind which work can proceed unseen by the audience. The area has neither lighting bars nor borders. The masking can be opened in the centre in trapezoid-shape. It can also be completely removed to leave the area 'bare'. The area inside the trapezoid space has a height of 2'30m and cannot be lit up from the bars.



## STAGE / ORCHESTRA MATERIAL AND PIANOS







*This material is shared by the two theatres. Consult availability.*

## LIGHTING

LT-LIGHT HYDRA SPACE CONSOLE: 2048 DMX outputs / 24 submasters

DMX/ETHERNET NODE: DMX line connection by means of RJ-45 connector

DIMMERS ETC-IES SINEWAVE: 72 x 3 KW channels

	18	Fresnel 650w	ADB Strand Quartet
	10	P.C. 1kw	ADB C101 *
	6	LED spot	Chauvet COLORado 1 Quad Zoom Tour <i>(fixed on a counterweight bar)</i>
	6	Closed 750w	4x ETC Source Four 90° - 2x ETC Source Four 70° (with their Iris and gobo holder – type A)
	24	Source Four PAR	
	12	Panorama 500w	In place as theatre lighting

*\* Shared with the main theatre. Consult availability.*

*Filters: Will be supplied by the companies.*

*Smoke: Given the characteristics of this theatre, no smoke or fog effects can be used.*

## FLOOR

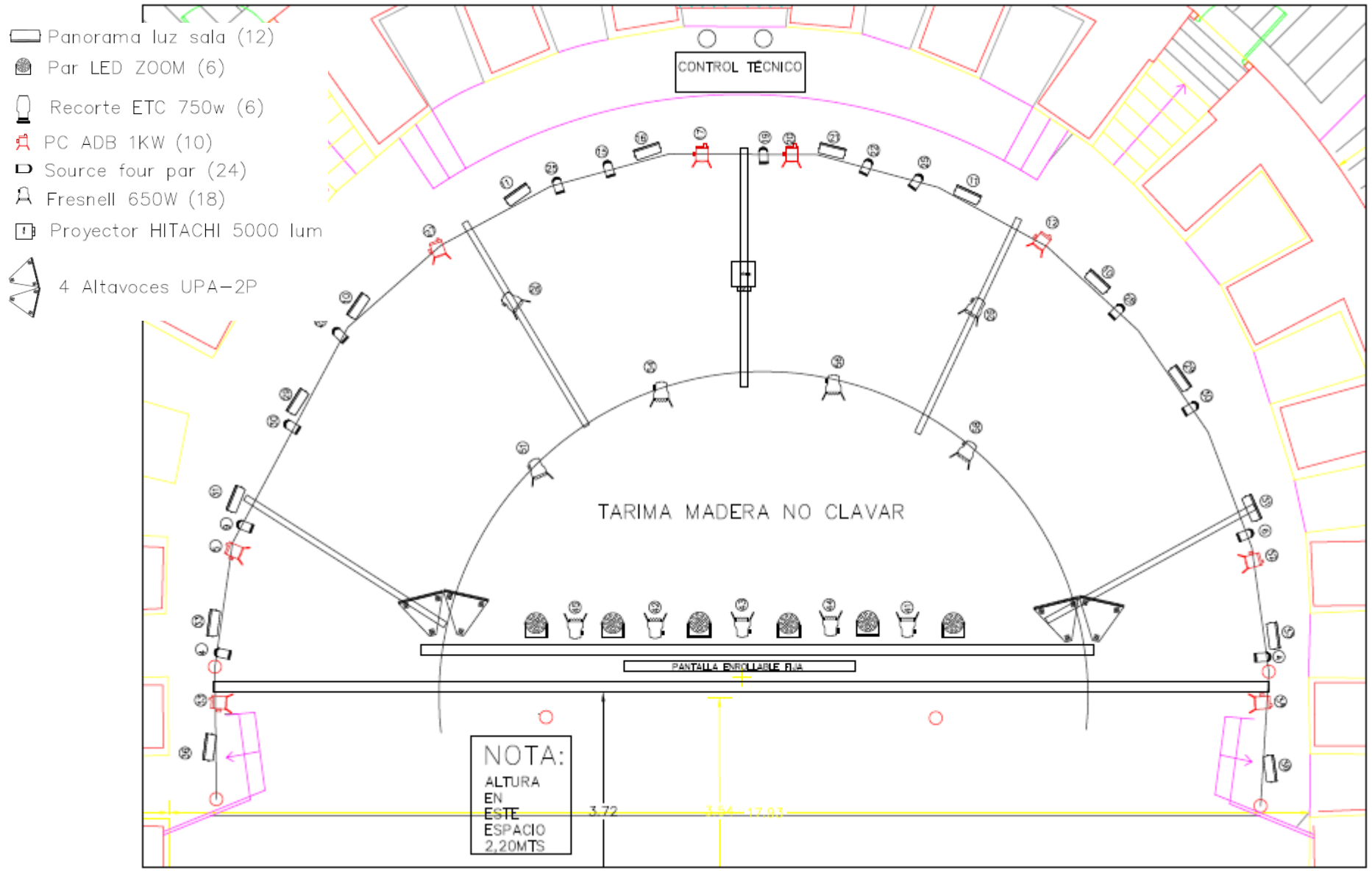
*Wood. No nails, screws or paint must be used.*

1 Black dance carpet / 8 x 2 m (3 rolls).\* *Neither ladders nor Genie lifts must be used on the linoleum.*

*\* Consult availability*



LIGHTING PLAN -



## AUDIOVISUALS

This is a theatre with excellent acoustics and does not normally require excessive amplification.

Please note that the PA is located at the back of the stage (behind the artists), meaning that it is not generally necessary to use monitors.

## PA AND CONTROL SYSTEM

- 1 COMPACT MIDAS M32 digital console (32 channels / 16 outputs)
- 4 MEYER UPA-2P (PA) self-powered speakers
- 1 MEYER self-powered speaker (subwoofer)
- 5 MEYER UPA-1P self-powered speakers

## PLAYERS

- 1 Double CD players with USB Numark auto pause

## MICROPHONES

- 1 SENNHEISER EW G4 syst. - Sennheiser E 935 hand held cardioid mic
- 1 SENNHEISER EW 500 syst. – beltpack EW 500 G3 (LEMO connector) with headset (HSP ESSENTIAL OMNI) or lap mic (MKE40 - MK2)

*Other material is shared by the two stage spaces (see main theatre microphones). Consult availability.*

## SCREEN

- 1 White screen: 2 x 1.5 m
- 1 Grey screen: 2 x 1.5 m
- 1 White screen: 3.60 x 2.40 m (motorised, fixed location at the back of the stage)
- 1 White screen: 6.5 x 3.65 m (consult conditions of use)

## PROJECTORS

- 1 HITACHI CPX 8150 5,000 lumens - Middle Throw Lens, zoom x 2 ML-703 – Connection: HDMI, VGA and BNC by components.  
*Located in a fixed position for projecting onto the 3.60x2.40m screen*

# DRESSING ROOM - WARDROBE

All dressing rooms have a toilet with hot water, heating and Wi-Fi connection.

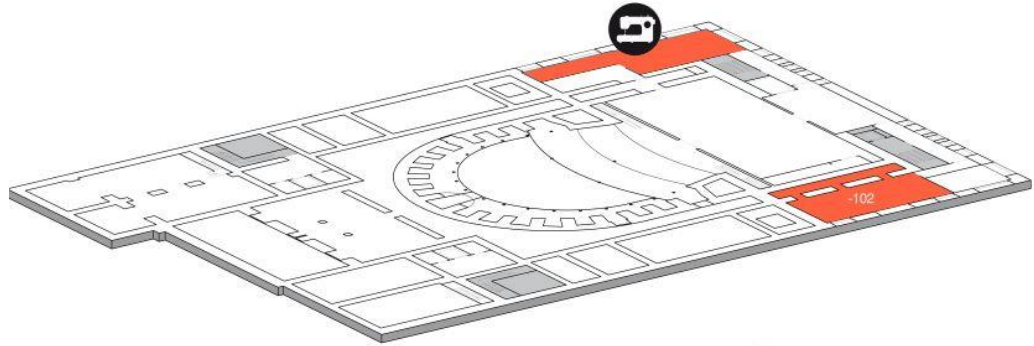
The Wardrobe area has 2 washing machines, 1 dryer and several irons

## Floor -1

-102 Collective, 26 pax



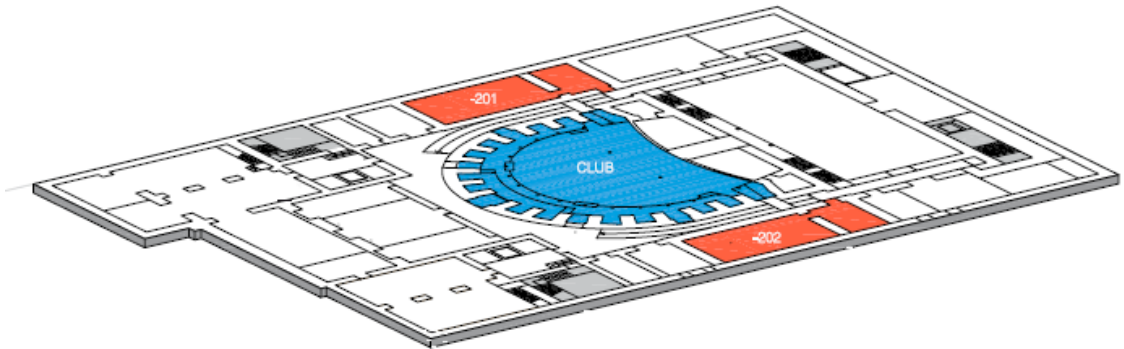
Wardrobe



## THE CLUB Floor -2

-201 Collective, 20 pax

-202 Collective, 20 pax



# OTHER SPACES



FOYER



DANCE ROOM



CHINESE ROOM

PRESS CONFERENCE ROOM



## LOADING AND UNLOADING

Located to the rear of the theatre (Calle Oquendo, facing number 8), the entrance has a loading bay with a hoisting platform (which lowers to 50 cm from the ground and lifts to a height of 1.30 m. maximum weight: 1,000 kg), followed by a sliding door, with a height of 3.10 m and width of 2.40 m.

The Theatre does not have its own parking space. Once the loading / unloading has been completed, the lorry cannot be parked at or around the Theatre. The nearest parking areas are:

### Lintzirin AIE Parking Area:

Poligono Lintzirin 7- 1 bajo 1

N I: direction Madrid – Irún / Km 469 - 20180 Oiartzun Gipuzkoa

Tel: (0034) 943 260 743

Price: €24.75/24 hours

7 short-stay spaces. Cannot be booked in advance..

### Zubieta Parking Area

N I: direction Irún – Madrid / Km 450.6

Abalotz, s/n (beside the Zubieta Racecourse) - 20160 San Sebastián

Tel: (0034) 943 360 990

Price: €17.30/24 hours

8 short-stay spaces. Can be booked in advance when available: 943.050.676.

### MOWIZ TRUCK PARKING AREAS

#### Astigarraga Integral Transport Area

PK17+000-16+500 AP-8/AP-1, direction: Norte Astigarraga,

20115, Gipuzkoa

341 places

#### Oiartzun Integral Transport Area

PK8+500-9+000 AP-1/AP-8, direction: Sur Oiartzun,

20180, Gipuzkoa

184 places (pay-as-you-go)

Rate: 1st hour free of charge - €28.70/24 hours; for 48 hours: €1.16/hour.

The price rises after 48h (pay-as-you-go)

Bookings can be made through the **mowiz TRUCK** App



## SUNDRY

### TIMES

The details of mounting, rehearsal and performance times will be confirmed following assessment by our technical production staff.

Work will stop for a 2-hour break at lunchtime whenever possible. For other requirements, please consult the technical producer.

No dimmers or other Theatre apparatus can be switched on without the presence of a Theatre technician.

### STAFF

For performances in the main theatre, we work with minimum staff of: 3 lighting / machinery technicians + 1 AV technician. In the Club the basic technical control team is 1 lighting / machinery technician + 1 AV technician.

The staff required for each performance must be agreed to with the person coordinating the technical production.

The services of ancillary, loading/unloading, smoke security, wardrobe, catering staff, etc. will be decided and hired according to the production requirements.

### MERCHANDISING

If they wish, after due coordination with the technical producer, companies can sell their merchandising in a space visible to the public. One or several tables can be provided if requested beforehand. The Theatre will not provide specific members of staff to look after the merchandising; such staff will be hired separately.

## GENERAL REQUIREMENTS

Technical personnel from the company must come equipped with regulation Personal Protective Equipment (PPE): footwear, gloves and safety helmet, as specified in the contract.

Please remember that the following are not permitted:

- Eating and drinking in the theatre, on the stage and in the dressing rooms.
- Smoking inside the building.
- Using earth, sand, talcum powder, resin, water or any other elements likely to damage the floor of the stage and/or the Theatre equipment without informing the technical producer. In the event of reaching an agreement for their use, the corresponding measures must be taken to prevent them from causing damage.
- People not belonging to the Theatre must not move around within the Theatre premises without having received prior authorisation to do so from the technical producer.
- Enter pets into the building.

All stage activity must stop 30 minutes before the performance is due to begin (when the doors are opened to the audience).

Additional cleaning: we must be advised in the event of using confetti or other elements requiring extraordinary cleaning.

Those wishing to film or take pictures of activities inside the building must first of all apply for permission by completing the [request form](#) and submitting it to the communication department for final authorisation. The location and type of work to be carried out must also be agreed to with the technical producer.

There is a fountain in the hall of each wing. Bottled water is not supplied.

All health and safety measures must be observed at all times.

General contact number for the production department: 943 48 33 06 / 943 48 33 04; [victoriaeugenia@donostia.eus](mailto:victoriaeugenia@donostia.eus)